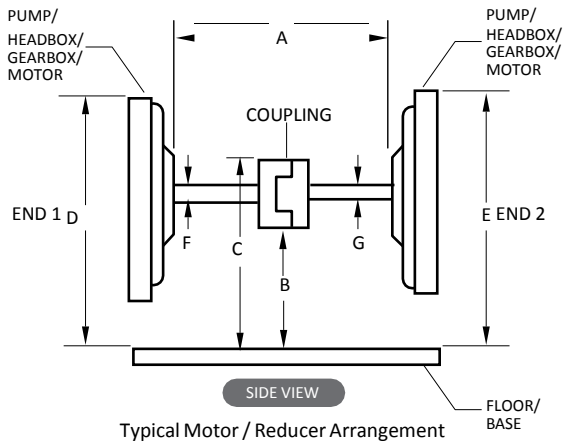


# COUPLING GUARD DATASHEET

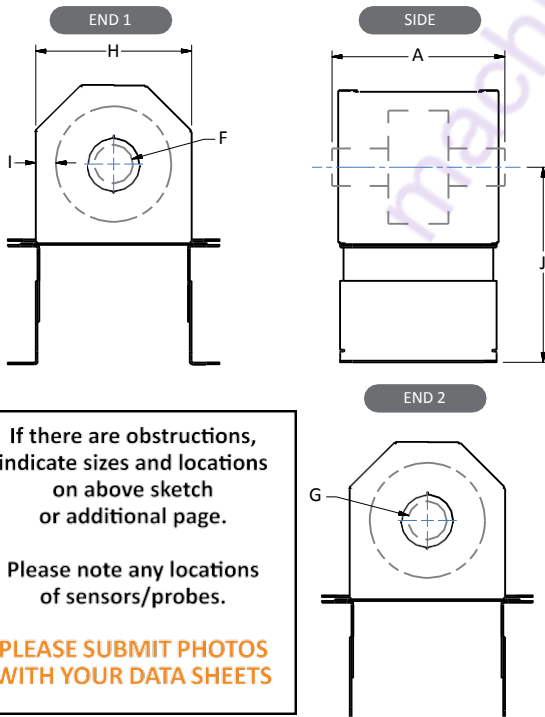
**COMPANY:** \_\_\_\_\_  
**CONTACT PERSON:** \_\_\_\_\_  
**LOCATION:** \_\_\_\_\_  
**PHONE:** \_\_\_\_\_ **FAX:** \_\_\_\_\_  
**EMAIL:** \_\_\_\_\_  
**EQUIPMENT #:** \_\_\_\_\_

**PLEASE SUBMIT PHOTOS WITH YOUR DATA SHEETS**

### FOR USE WHEN THERE IS NO GUARD IN PLACE



### FOR USE WHEN THERE IS AN EXISTING GUARD IN PLACE



If there are obstructions, indicate sizes and locations on above sketch or additional page.

Please note any locations of sensors/probes.

**PLEASE SUBMIT PHOTOS WITH YOUR DATA SHEETS**

### INFORMATION REQUIRED

| ITEM  | DIMENSION |
|---|-----------|
| A - Distance Between Motors/Gearboxes             |           |
| B - Height from Floor/Base to Bottom of Coupling  |           |
| C - Height from Floor/Base to Top of Coupling     |           |
| D - Height of Motor/Gearbox (End 1)               |           |
| E - Height of Motor/Gearbox (End 2)               |           |
| F - Shaft Diameter (End 1, including keyway)      |           |
| G - Shaft Diameter (End 2, including keyway)      |           |
| H - Overall Width of Guard                        |           |
| I - Distance From Coupling to Guard               |           |
| J - Height from Floor/Base to Centerline of Shaft |           |

### EXTRA INFORMATION

|                          |                                    |
|--------------------------|------------------------------------|
| End 1                    | Rubber / Fill Plates               |
| End 2                    | Rubber / Fill Plates               |
| Service/ Inspection Door | None / Top / One Side / Both Sides |

### SPECIFY GUARD COATING COLOR

| ITEM                   | PLEASE INDICATE        |
|------------------------|------------------------|
| Guard Body             | Yellow / Black / Other |
| Guard Front Mesh Panel | Yellow / Black / Other |

### SPECIAL REQUIREMENTS

| AREA                      | PLEASE INDICATE |
|---------------------------|-----------------|
| Lubrication               | Yes / No        |
| Vibration Analysis        | Yes / No        |
| Heat Analysis             | Yes / No        |
| Speed Sensing             | Yes / No        |
| Over-Heating Concerns     | Yes / No        |
| Corrosive Area            | Yes / No        |
| Flammable Area            | Yes / No        |
| Lead Paint Abatement Area | Yes / No        |
| Other                     |                 |

How would you like to attach the guard to base or floor?

Concrete Wedge Anchors   
  Welded On   
  Standoff/Supports



EXAMPLES OF OBSTRUCTIONS THAT WE WOULD NEED TO KNOW ABOUT